

Hume Whittlesea Local Learning and Employment Network (HWLLEN)

Keeping young people connected

Transitioning from school can be an exciting - and daunting experience. There are many services and organisations available to assist young people as they navigate their way through the maze of options and opportunities.

We are here to help connect young people with those in our local region who can provide the best advice and assistance for a range of matters such as further study, training, employment, wellbeing services and support programs.

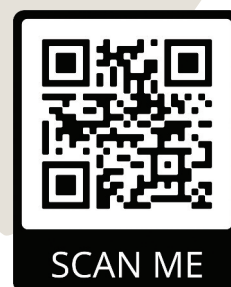
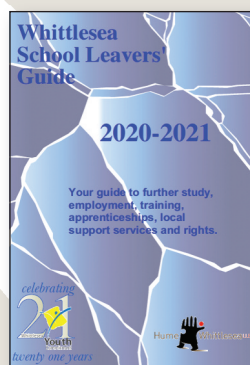
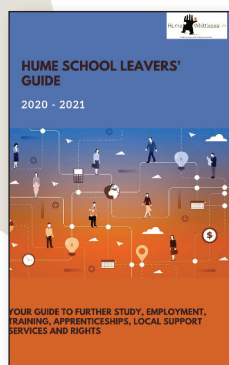
Our School Leavers' Guides 2020-2021 - Every young person will benefit from the information in this guide.

Both the Hume School Leavers' Guide and Whittlesea School Leavers' Guide provide a wealth of information for school leavers and is an essential resource for navigating through the next important transitional phase of a young person's life.

In the guides, you will find helpful tips for:

- How to prepare for an interview and write job applications, resumes and respond to Key Selection Criteria.
- How to get the help needed to ensure a smooth transition from school to further study, training and/or employment.
- How to access support services and assistance on a range of matters including Centrelink, Medicare, housing, disability, refugee and migrant settlement, indigenous support, legal aid, police assistance, youth support, L2P program, health and mental health, and library services to name a few.

Our School Leavers' Guides are located on our website <https://www.hwllen.com.au/school-leavers-guide>



HWLLEN - Who we are

The Hume Whittlesea LLEN is one of 31 Local Learning and Employment Networks (LLENs) operating across the state.

Our core role is to support the wellbeing of young people and assist with their engagement in education, training and employment.

We do this by:

- Providing access to advice about career & pathway development
- Connecting young people to relevant education and service providers, industry partners and community agencies
- Creating an awareness of the scope of opportunities and choices available .

For more information about the HWLLEN, go to our website:

Hume Whittlesea LLEN Support Connect Service

Need more help – or not sure where to start? The Hume Whittlesea LLEN is available for young people and families to make contact with us to connect school leavers to access relevant advice about a range of services further study, training, employment and wellbeing.

To access Hume Whittlesea LLEN Support Connect please contact one of our friendly staff members by calling 0435 653 912 or emailing: hwllen@hwllen.com.au



The HWLLEN is supported by the Victorian Government